



KLT REACHES 5,000 ACRES OF CONSERVED LAND WITH THE ADDITION OF THE VIENNA WOODS CONSERVATION EASEMENT

SEVENTY-ONE ACRES, VIENNA

Theresa Kerchner, Executive Director

When we first stepped onto this land almost forty years ago, it was love at first sight. With its open fields, woodland, vernal pool, and views of the Western Mountains, we jumped at the chance to buy in 1993. Rather than owners, we view ourselves more as its caretakers. Working with KLT to conserve the property has been a very positive experience. We feel great comfort in the knowledge that our land will be forever protected. ~ Muffy and Jim Floyd

Long-time Vienna residents Martha and Jim Floyd have pushed the Kennebec Land Trust over the 5,000 acres conserved mark with their March 2015 donation of the 71-acre Vienna Woods conservation easement.

Located off the Trask Road in Vienna, Vienna Woods encompasses hayfields, mixed woodlands with trails, and wetlands with a significant vernal pool. A viewpoint called "The Pinnacle" along a ridge provides beautiful views of Vienna and McGaffey mountains to the east. Views to the northwest feature Mt. Blue, Mt. Abraham, and Sugarloaf and Bigelow mountains. The Vienna Woods Conservation Area shares a boundary with the 130-acre Ladd Forest, owned by the Small Woodlot Owners Association of Maine.

Please join us for a hike on the newly constructed Vienna Woods trails, the property dedication, and refreshments on Saturday, October 3 from 10 a.m. to noon.

Continued on page 10...



A view from "The Pinnacle".

Jane Davis

PLEASE JOIN US FOR
KLT'S VIENNA WOODS DEDICATION

SATURDAY, OCTOBER 3, 2015
10:00 A.M. TO NOON

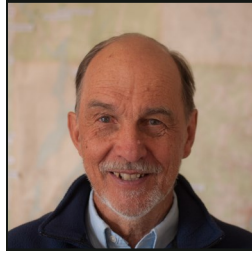
**PROPERTY DEDICATION, HIKES, AND
REFRESHMENTS WITH THE FLOYD FAMILY.**

RAIN DATE: SUNDAY, OCTOBER 4, 10:00 A.M.

PRESIDENT'S MESSAGE

Greetings KLT members and supporters,

As I look back on the past two years, I'm impressed with all that KLT has accomplished so quietly and effectively. All of us – KLT's staff, our board, our advisors, and you, our dedicated members – have good reason to be proud. Please read over our accomplishments list – it's impressive!



Brian Kent

As you know, our 25th Anniversary Capital Campaign, launched in late 2013, is still in full swing. Our goal is to raise \$2.2 million for KLT's land conservation projects and programs, \$500,000 in donated easements and land, and \$1 million over a ten-year period for our Endowment Fund. We hope to reach this ambitious goal by the end of the year and then celebrate! See page nine for our Capital Campaign report. Thank you for your donations to date.

A year ago we announced that we aim to acquire Howard Hill, a unique landmark of statewide significance comprised of 164 beautiful wooded acres behind the State House. We plan to place a conservation easement on the property and donate the land to the City of Augusta to manage for outdoor recreation, as a demonstration forest, for wildlife habitat, and to protect water quality and scenic views.

Please urge your friends to donate to our Howard Hill campaign and ask your legislators to continue to support the Land for Maine's Future program – we were awarded \$337,500 for Howard Hill. See page three for our financial report.

We hope you have been out on the trail using *Take a Hike!* KLT's new hiking guide. It is proving to be very popular, and we will be adding properties to the guide in the coming years.

Finally, our Local Woods Work conference in November was a great success. KLT is helping blaze a new trail with our efforts to acknowledge the value, both ecological and economic, of our region's forest lands.

Brian Kent
President

SINCE 2013 KLT HAS:

- reached the milestone of having conserved more than **5,000 acres**
- protected four new properties:
- ◆ The 142-acre **Samuel Hutchinson Homestead Conservation Area** in Litchfield
- ◆ A 65-acre addition to the **Parker Pond-David Pond Wildlife Habitat Corridor** in Fayette
- ◆ The 26-acre **Judy Kane Kennebec River Conservation Corridor Parcel** in Augusta
- ◆ The 71-acre **Vienna Woods Conservation Area**
- published our popular hiking guide, *Take a Hike!*
- maintained 37 miles of trails with the assistance of our volunteer stewards and staff
- moved into our office at 331 Main Street in Winthrop
- developed and launched *Conservation Across Generations*, our 25th Anniversary Capital Campaign, and met our fundraising goals to date
- achieved our goal of 1,000 household members
- set an attendance record at our 2014 Anniversary Celebration and held our 1st annual Tri-Sport Challenge
- with the Maine Forest Service, CEI, the Maine Coast Heritage Trust, Grow Smart Maine, and the Kennebec Woodland Partnership, organized and hosted the 2014 Local Wood Works Conference
- welcomed five new board members: Sue Bell of Augusta; Jed Davis of Manchester; Martha Nielsen of Manchester; Jean Scudder of Readfield; and Joe Stevenson of Wayne.
- offered hikes for all ages
- expanded our partnership programs, including the five-day *Children's Art and Nature Camp* with The Vaughan Homestead Foundation and the Harlow Gallery; *Loons, Eagles, and Osprey on Cobbossee* with Friends of the Cobbossee Watershed; and a *Spring Bird Walk* with Natural Resources Council of Maine.



Mark and Lindsay Nelsen, CE donors, at the Samuel Hutchinson Homestead Conservation Area Property Dedication, October 2014.

KLT'S THIRTEENTH ANNUAL LYCEUM ~ OVER 300 ATTEND MARCH AND APRIL HOWARD HILL LYCEUM PROGRAMS

Robert Kimber

Howard Hill. What else should the lyceum topic have been in KLT's twenty-fifth anniversary year? What else *could* it have been? Who else but KLT's board and staff would have had the imagination and insight to see what a recreational and educational asset a forested reserve on this very hill could be for the City of Augusta, and what symbolic value it would hold for all the people of this state? And who else but KLT's board and staff would have had the know-how and enterprise to get the deal done? With Howard Hill standing forever green and wooded across from the State House, no governor or legislator should ever be able to forget that, as the poet W. H. Auden told us, "a culture is no better than its woods."

Each of this spring's lyceum speakers brought the perspective of his field of expertise to bear on Howard Hill, not only highlighting notable features of the property but also educating us on how to understand and appreciate it on our own visits there.

The theme of historian Kent Ryden's talk was that "history" is not singular but plural; there are as many histories as there are historians. Legend has it, for instance, that the hill takes its name from one Betsy Howard, who is said to have escaped an Indian attack by hiding in a cave on the hill. A less romantic account but one with written records to back it up is that the hill took its name from James Howard, the first commander of Fort Western, or possibly from his son, Samuel Howard.

Our own Bob Marvinney, Maine's State Geologist, took us back not just hundreds but millions of years in the earth's history. Bob explained how the movement of tectonic plates created the Appalachians, which were then ground down and shaped by glacial action, a geological story that can be read on Howard Hill today if you know how to see it.

Botanist Eric Doucette stressed how interesting the so-called common plants and animals are, citing the clever American crow as an example, and how important a role many easily overlooked organisms play in the communities of the natural world. Here, Eric extolled the virtues of lichens, which are among the first organisms to colonize barren surfaces and initiate succession after cuttings. He also pointed out the ecological relationship between this forested island of Howard Hill and the settled urban landscape around it, with the bird feeders and compost piles of the city helping to feed the coyotes, raccoons, and skunks of the forest.

Kennebec Savings Bank
your community bank since 1870 
2015 LYCEUM SPONSOR

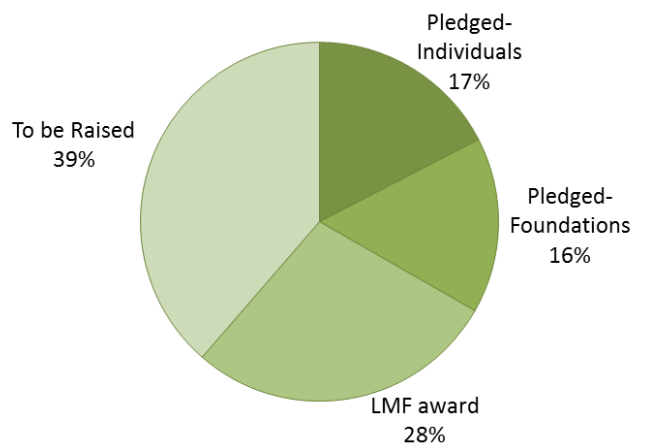


Norm Rodrigue

HOWARD HILL BUDGET

Purchase price	\$925,000
Transaction Costs	
Survey	\$10,000
Appraisal	\$10,000
Environmental Hazard Survey	\$3,000
Title report & insurance	\$3,000
KLT Legal Fees - Lake and Denison pro-bono services	Pro-bono
Project coordination and oversight	
2009-2015 Project Coordination: KLT Staff and Consultant	\$85,000
Stewardship Fund: Trails, Management, Easement Monitoring	\$130,000
Total	\$1,166,000

Howard Hill Campaign



Save the Date! KLT's Capital Campaign and Howard Hill Land Celebration, Thursday, Oct. 15, 5:00 – 7:00 p.m.

CANOE RACK RENTAL SPACE ON HUTCHINSON POND



KLT is now renting spaces on a rack at our 81-acre Hutchinson Pond Conservation Area – just 100 feet from the shoreline! KLT members wishing to store a non-motorized boat for the 2015 season may apply by completing a Hutchinson Pond Boat Storage Application (available online at www.tkl.org/hutchinsoncanoe/) and submitting it to KLT along with a check in the amount of \$50, the annual storage fee.

Thank you to the volunteers who built our rack in 2014: Norm Rodrigue led a crew that included Andy Smith, Toby Smith, Dan Simpson, David Ellis, Tom Simonez, and Syd Sewall. The lumber for our rack was milled by Nat and Bruce Bell from trees we harvested during our Curtis Homestead forestry program.

PLEASE PATRONIZE OUR BUSINESS



PARTNERS IN CONSERVATION



BUSINESS LEADERS

G&E Roofing
Kennebec Savings Bank
Longfellow's Greenhouses
Lake and Denison Attorneys
Camp Winnebago
LPK

SPONSORS

Alternative Manufacturing, Inc.
Amy P. Trunnell, CPA
Camp Androscoggin
Conservation Realty
Cribstone Capital Management
Fuller Ink
Patricia P. Ladd, Homestead Realty
Knowlton Hewins Roberts Funeral Homes
Levey, Wagley and Putman, PA
The Mendall Financial Group, LLC
An Independent Firm

PACESETTERS

Sprague and Curtis Real Estate
Stantec Consulting Services
The Liberal Cup
Two Trees Forestry
Winthrop Veterinary Hospital

TRAILBLAZERS

Camp Laurel
Camp Vega
Copies Etc.
The Breathable Home
The Thomas Agency
The VIA Agency

BUSINESS PARTNERS

Camp Bearnstow
China Region Lakes Alliance
Family Dental Practice;
Dr. Sarah Rossignol, DDS
J&S Oil, Inc.
Kennebec Valley Chamber of Commerce
Lakeside Motel
Saunders Manufacturing
30 Mile River Watershed Association
Two Loons Farm and Conservative Builders
Winthrop Area Chamber of Commerce
Winthrop Commerce Center

The Business Partners in Conservation program recognizes business leaders and companies in our community who have made significant contributions of cash, goods, and services to support the regional conservation efforts of the Kennebec Land Trust. To learn more about this program, please contact the KLT office at 377-2848.

KLT'S HIKING GUIDE, *TAKE A HIKE!*, WAS MADE POSSIBLE THROUGH SPONSORSHIPS FROM OUR BUSINESS PARTNERS. THANK YOU!

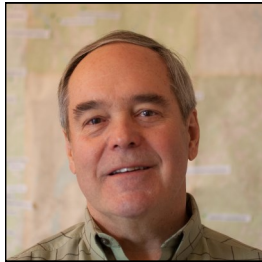
STAFF AND BOARD TRANSITIONS



Matt Silverman,
Conservation Assistant

We say a fond farewell, but we know we will see you again, to Matt Silverman, our former Conservation Assistant. Many KLT members and supporters had the opportunity to meet and work with Matt in our office and in the field. Over the past two years, Matt's many talents and his commitment to KLT and to conservation and sustainability inspired everyone.

Matt Silverman After almost two years of working for KLT, I'm off on a new adventure with my partner, starting with a move to Vermont for the summer. It has been an incredible and dynamic learning experience to work for the Kennebec Land Trust. A big thank you to KLT and its members, supporters, volunteers, and directors, plus Theresa, Gina, and Jean-Luc – you are a fantastic community to know and work for. I have looked forward to each and every day in the office and out in the field. Given KLT's supportive membership, I'll be excited to watch it continue to thrive over the next few years. I am extremely proud of what KLT is doing for the land and people of Kennebec County; together we are helping secure Maine's sustainable future. It has been an honor to be a part of it. Thank you for all the support, knowledge, and positive energy you've given me. I hope to see you soon and stay in touch.



Jed Davis,
KLT Director

Jed Davis I left New Jersey in 1968 to attend Colby College and to work during the summers for the Appalachian Mountain Club. Later I tried banking in New York for a few years, got married, and spent two years in the Peace Corps. After returning to Maine I worked in the Energy Office and then at Nicolson & Ryan Jewelers, from which I retired as President in 2008. Next to family, my greatest love is forests, rivers, and mountains, and I have traveled extensively to explore them. I live in Manchester with my wife Frannie on our forty-acre tree farm. I have two grown daughters.



Martha Nielsen,
KLT Director

Martha Nielsen I'm a Maine transplant and have lived in Manchester for twenty-two years with my husband Joe and our three children. My lifelong love of the outdoors and conservation, developed from my earliest days of exploring the birds, flora, and geology of northern Minnesota with my family, has influenced my career as a hydrologist with the U.S. Geological Survey in Augusta. Some of my past experiences include serving on the Manchester Conservation Commission and the board of the Maine Association of Conservation Commissions. I am currently finishing my second and final term on the Manchester Board of Selectmen. I am also quite active in my church. I love maps, old and new, and have a passion for exploring the beautiful and historic nooks and crannies of central Maine on foot, on skis, and by canoe. I am very excited to be joining the Board of the KLT and to have the opportunity to work with the other excellent board members, staff, and volunteers on the conservation of our local natural areas.

KLT BOARD OF DIRECTORS

Brian Kent,
President, Litchfield
Mary Denison,
Vice-President, Kents Hill
Amy Trunnell
Treasurer, Readfield
Patrice Putman
Secretary, Winthrop
Sue Bell, Augusta
Jed Davis, Manchester
Stan Eller, Manchester
Lisa Kane, South China
Howard Lake, Readfield
Scott Longfellow, Manchester
Bob Marvinney, Readfield

Robert Mohlar, Readfield
Martha Nielsen, Manchester
Norm Rodrigue, Manchester
Jean Scudder, Readfield
Michael Seitzinger, Augusta
Deb Sewall, Hallowell
Joseph Stevenson, Fayette

KLT STAFF

Theresa Kerchner
Executive Director
Gina Lamarche
Program Director
Jean-Luc Theriault
Stewardship Coordinator

SUMMER INTERNS

Simon Pritchard
Avery Siler

NEWS DESIGN

Gina Lamarche

NEWS EDITORS

Theresa Kerchner
Janie Matriciano
Deb Sewall

KLT ADVISORY BOARD

Jerry Bley
Harold Burnett
Jim Connors
Hon. Kenneth Curtis
Elizabeth Davidson
Caroline Farr
Sarah Fuller
Peter Geiger
David Gibson
Glenn Hodgkins
Lloyd Irland
Charlie Jacobs
Mark Johnston
Ron Joseph
Kevin Kane

Martha Kent
Robert Kimber
Gloria & Lincoln Ladd
Robert Ladd
Barbara & Mort Libby
Jon Lund
Jessie & Douglas Macdonald
Patricia Mooney, Ph.D.
Jeff Pidot
Dianne E. Ryan
Reade & Joan Ryan
Rebecca Stanley
Jym St. Pierre
Robert Weston

NOTES FROM THE STEWARDSHIP DESK

Jean-Luc Theriault, Stewardship Director



Photograph: Rebecca Stanley

Stewardship work at Vienna Woods with Jim and Muffy Floyd.

I hope you've been able to enjoy the trails on a KLT property this spring! With field season in full gear, we are busy taking care of the lands that you have helped conserve.

KLT recently decided that a review by the Land Trust Accreditation Commission would enhance our land conservation work. Last fall we undertook a careful review of our readiness for accreditation and concluded that there were several areas in the stewardship department that would need to be strengthened before we could feel confident in submitting an application.

Our first task has been to create a new filing system in which records of our sixty-one fee and easement holdings will be mirrored in digital and paper formats.

With the help of two volunteers, Donna Buck and Jane Davis, every scrap of paper KLT has on file pertaining to each property is being combed through. With Donna and Jane's dedicated help we will end up with a system that lets us access important information efficiently and do our work more effectively.

Another area that will strengthen the organization is the documentation of monitoring visits to conservation easements and inspection visits to land that KLT owns. Accreditation requires that each property be walked annually to check both boundary lines and the interior, in order to ensure that the terms of the easement are being upheld. Thanks to our seventy volunteer stewards, we have annual monitoring reports on file for all of KLT's conservation easements.

Our next goal is to improve boundary markings on our fee properties with the help of our summer interns, Avery Siler and Simon Pritchard.

We look forward to seeing you out on the trail this summer!

WELCOME SUMMER INTERNS!

Simon Pritchard

Hi there! I'm a rising senior at Bowdoin College in Brunswick, majoring in Environmental Studies and Government and Legal Studies, with a minor in German. I find the complexity and urgency of environmental issues fascinating, and I hope to dedicate my life to them. While originally hailing from the wilderness of concrete and glass that is New York City, I have fallen in love with Maine, and this summer will be the second in a row that I have spent here. When I'm not studying environmental policy (which is a great deal of the time), I am playing volleyball, reading, breakdancing, and seeking out adventures to go on. I'm excited to do some conservation work this summer, get my hands dirty, and learn how land trusts really work.



Simon's first stewardship project ~ planting apple trees at Curtis Homestead with KLT Stewardship Director Jean-Luc Theriault and volunteer Pam Bell.

Avery Siler

I'm a rising senior at the College of William and Mary in Williamsburg, Virginia, where I'm majoring in Art History and minoring in Geology. I grew up in Washington, D.C., but spent my summers exploring the forests and mountains of Colorado, where my extended family lives. The joy of discovery that wild land provides has encouraged me to pursue a career in land management and conservation. I'm excited to learn more about balancing competing land interests, sustainable forestry, and the general functioning of land trusts. I'm thrilled to be spending my summer protecting and enjoying the beautiful woodlands of Maine!



FOR THE LAND

THE KENNEBEC LAND TRUST LEGACY SOCIETY

Theresa Kerchner, Executive Director



For more than a quarter of a century, annual gifts from a thousand-plus household members have provided a strong foundation for KLT's land conservation work. Working together we have conserved over five thousand acres for outdoor recreation, as working farms and woodlands, and for the protection of wildlife habitat, scenic beauty, and water quality. We should all be proud of our collective success story! As we look ahead to the next decade, we know that our conservation impact will continue to depend on both membership contributions and larger, long-term gifts.

To ensure our continued success, we have established the KLT Endowment Fund. Endowment gifts leave a powerful legacy that will support land conservation

both today and in the future. Donors who name KLT as a beneficiary of a portion of their estates or who set up life income gifts for the benefit of the Trust will be recognized as members of our Legacy Society. All proceeds from planned gifts will be invested for the long term in an endowment fund that preserves the principal.

When most people think of charitable contributions, they think of annual donations. But there are many other ways to support KLT. To schedule a meeting to discuss KLT's Legacy Society, please call the office or send me an email (207-377-2848 or tkerchner@tklt.org).

Thank you for your commitment to Maine and the land.



Parker Pond Trail Dedication
Photograph: Jim Anderburg

KLT ~ ONE FAMILY'S LONG-TERM VIEW

Glenn Hodgkins, Advisory Board Member, Past President

For the last twenty years KLT has been my top priority as a non-profit to support with volunteer time and donations. It gives me hope for the future. My wife Sara also finds KLT's mission to be a vital one. KLT has played – and will continue to play – a critical role in protecting many acres of woods and wetlands in our area that would otherwise be developed. Conserving 5000+ acres is an amazing achievement, made possible by much hard work and the support of many local people. Conservation projects like KLT's are needed not only for our native wildlife and plants, but also for ourselves and our kids and grandkids to enjoy and experience. Our family has been hiking KLT trails since the kids were babies, and our teenagers Anna and Benjamin still enjoy these family outings. Anna, like me, is into birding, and Ben really appreciates the blueberries and the swimming. Being in the woods recharges me, particularly in busy times. Just today I was birding at Hutchinson Pond in Manchester and was thrilled to see black-throated blue warblers, blue-headed vireos, and great-crested and alder flycatchers. We will continue to be strong supporters of KLT for the next twenty years.



Sara, Ben, Glenn, and Anna Hodgkins

**THANK YOU FOR YOUR ASSISTANCE WITH
OUR OUTREACH, EDUCATION, LANDS,
LYCEUM, AND STEWARDSHIP PROGRAMS**



Kents Hill Work Day, Spring 2015

FALL 2014 ~ SPRING 2015

Mary Bayer, Nat Bell, Tracy Blake-Bell, Keith Bisson, Jerry Bley, Leon Bresloff, Donna Buck, Zach Stewart, **Central Maine Technology**, Ginny Coady, Jim Connors, Cheri Cooledge, Elizabeth Davidson, Jane and Stan Davis, Jed Davis, Manchester; Steve DeAngelis, Mary Denison, Eric Doucette, Eagle Scouts, Stan Eller, Muffy and Jim Floyd, Sarah Fuller, Jill Ippoliti, Charlie Jacobs, Jeff Janell, Kevin Kane, Brian Kent, **Kents Hill School**, Robert Kimber, Gloria and Lincoln Ladd, **Ladd Recreation Center**, Brenda and Howard Lake, Ken Laustsen, **KLT Land Donors, Stewards, Office and Field Volunteers, Directors and Advisors**, Scott Longfellow, **Longfellow's Greenhouses**, Jon Lund, Bob Marvinney, Janie Matrisciano, Donna and Tom Mickewich, Morten Moesswilde, Robert Mulliken, Catherine Murray, Emily Perkins, Jim Perkins, Patrice Putman, Joyce Rivers, Dave Rocque, Norm Rodrigue, Kent Ryden, Nancy and John Sage, Andy Schultz, Jean Scudder, Deb and Syd Sewall, Nancy Smith, Ken and Sue Spalding, Rebecca Stanley, Ellen Gibson and Kate Tremblay, **Vaughan Homestead Foundation**; George and Nancy Viles, Andy Walsh, Michael Waters, Warren Whitney, **Winthrop High School**, Margy Knight, **Winthrop Plays Outside**, Milt Wright

**MANY THANKS TO THESE
FOUNDATIONS FOR THEIR SUPPORT:**

Betterment Foundation
Davis Conservation Foundation
Elmina B. Sewall Foundation
Elsie and William Viles Foundation
Fields Pond Foundation
Helen and George Ladd Charitable Corporation
High Valley Fund of the Maine Community Foundation
Kennebec Savings Bank Foundation
LTA Excellence Program Grant
Silverseed Fund of the Maine Community Foundation
Maine Community Foundation
Norcross Wildlife Foundation
Windover Foundation



Jane Davis

**OUR NEW SIGN: ANOTHER GREAT
LOCAL WOOD PROJECT!**

Our front sign, carved by KLT's Conservation Assistant Matt Silverman from Maine-grown cedar, is now installed. Thanks to KLT member Joyce Rivers for supporting this project, Koehler Woodworks for the shop space, Tweedie Lumber for the cedar, and Carrot Signs for the sign painting advice, and Rebecca Stanley for designing and planting the new flower garden around the sign.

CAPITAL CAMPAIGN STATUS REPORT – THANK YOU!

as of June 4, 2015

KLT CONSERVATION FUND

Goal: \$2,200,000 Pledged: \$1,352,514

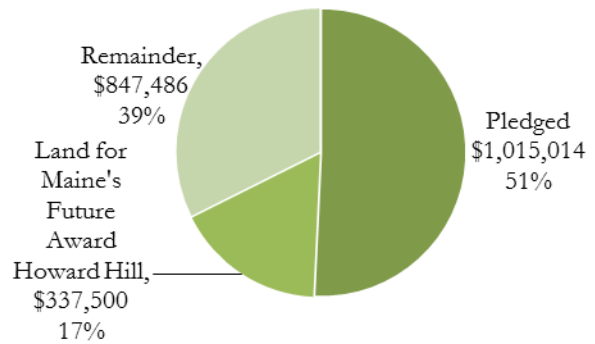
Cash gifts, grants, and pledges to KLT’s Land Conservation Fund will support land purchases (including Howard Hill in Augusta and an addition to Parker Pond Headland in Fayette), stewardship, and landowner assistance; trail construction and maintenance; recreational and educational programs; and trail maps and property boxes.

*Pledges are based on a five year payment schedule.

See Howard Hill Campaign Summary on page 3.

CONSERVATION FUND

INCLUDES HOWARD HILL AND
DAVID POND - PARKER POND WILDLIFE
CORRIDOR LAND ACQUISITION CAMPAIGNS



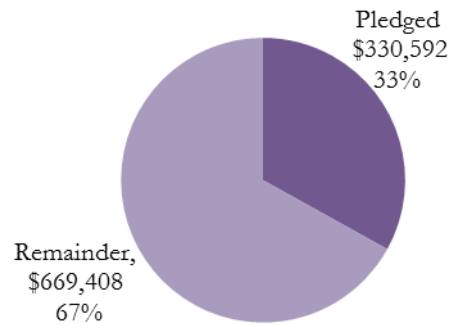
KLT ENDOWMENT FUND

Goal: \$1,000,000 Pledged: \$330,592**

Cash, pledges, and KLT Legacy Society planned giving and bequests will support current and future land acquisition, stewardship, and educational programs.

**Endowment goal is over a ten year period

ENDOWMENT FUND



DONATED LAND AND CONSERVATION EASEMENTS

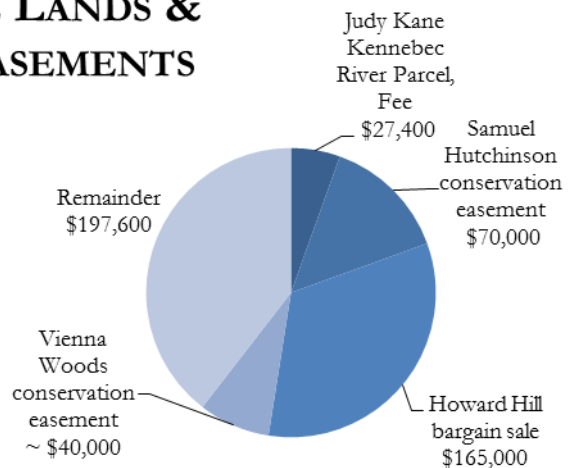
Goal: \$500,000 Pledged: \$302,400

In addition to purchasing lands with Capital Campaign Land Conservation Funds, we hope during the Campaign to permanently conserve lands worth over \$500,000 through donations of land, bargain sales, and landowners’ gifts of conservation easements.

Donations:

- Judy Kane Kennebec River Parcel (Augusta, 27 acres)
- Samuel Hutchinson Homestead Conservation Easement (Litchfield, 142 acres)
- Howard Hill Bargain Sale (Augusta, 164 acres)
- Vienna Woods Conservation Easement (Vienna, 71 acres)

FEE LANDS & EASEMENTS



Continued from cover...

After the October property dedication, hikers can access the trails from a small parking area at the end of the Trask Road.

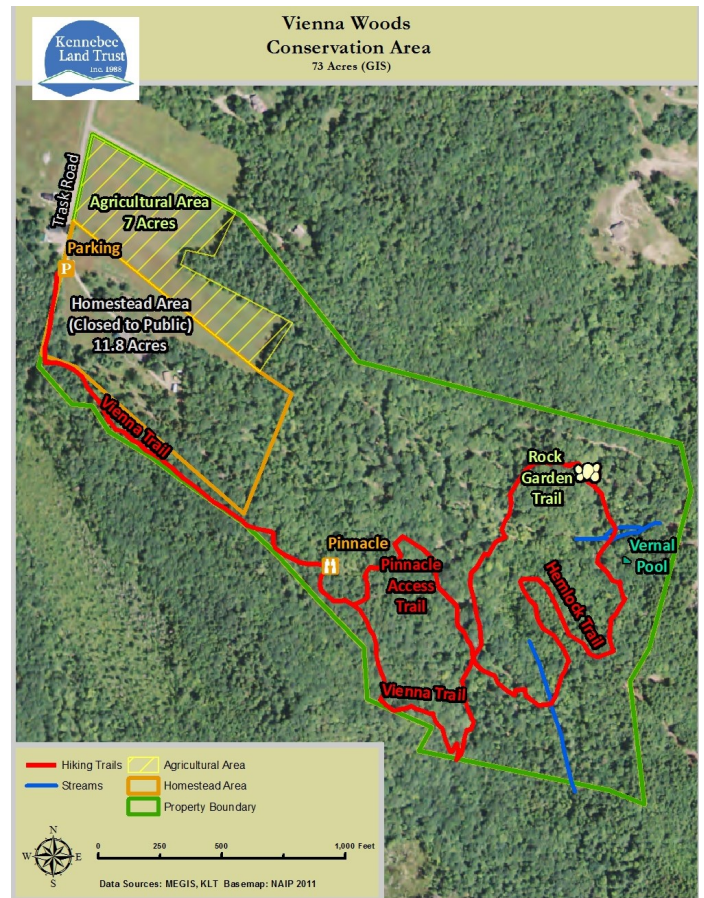
Several beautiful wooded trails will be maintained by the Floyds with assistance from KLT's staff, summer interns, and volunteers.

At the time of the Floyds' donation, Bob Mohlar, Chair of KLT's Lands Committee, commented,

Because of the generosity and kindness of its loving owners, Muffy and Jim Floyd, this wonderful gem of permanently conserved forest land with its trails and scenic views will now be accessible to the rest of us who share a love of Maine's outdoor heritage. The Floyds have nurtured and loved it, and now they've made the decision to conserve it and share it. And not just with us, but with generations to follow. We should remember this when we visit, and tread gently and respectfully. Thank you Muffy and Jim.



**KLT NEWSLETTER
SPONSOR**



WELCOME TO OUR NEW MEMBERS

- | | | | |
|----------------------------|--------------------------------|----------------------------------|---------------------------------|
| Patricia M. Albison | Charles Frolio | Senator Angus King & Mary Herman | Jan & David Rollins |
| Donald R. Andrews | Craig & Stephanie Garofalo | Kate & Jim King | William & Patricia Rosenberg |
| Fiora & Martin Arnold | Drs. David & Kathleen Gideon | Linda & Arthur Kingdon | Beth Sabbagh |
| Lisabeth Barrett | Anya Freiman Goldey | Sue Kistenmacher & Mark Koenig | Klavs & Jane Salgals |
| Joe & Brenda Blake | Jody Harris | Jennifer Lacombe | Janet & Ansley Sawyer |
| Linda G. Bolton | Robert & Susanne Hawkins | Jeanne LaFlamme | Jill & Ed Saxby |
| Jim & Beth Breazeale | Anne L. Head | Harry & Jennifer Lanphear | David & Eleanor Silsby |
| Bill & Janice Bridgeo | Ed & Kelli Hess | Raegan LaRochelle | Mary Simpson |
| Mike & Danielle Burian | Pam Hetherly & Jackie Fournier | Jonathan Lepoff | Nancy Smith |
| Janet Z. Burson | J. Thomas R. Higgins | Daniel & Maveline Locke | Martin Lewis Spahn |
| Daniel Caron | Sharon Hill | Mike Lund | Judy Stone & Randall Leb Downer |
| Joel Clement | Wes Hodgkins | James MacDougall | Priscilla Stred |
| Linda Conti | Sherry F. Huber | Edwin & Nancy Martin | Matthew Tardiff |
| Tim & Sue Cote | Jeff & Marcia Hubert | Rene & Pauline Mathieu | Greg & Andrea Thon |
| Richard & Janet Crane | Mary L. Huebner | Lakeside Motel | Cindy Townsend & Ron DiGravio |
| Richard & Laurette Darling | Pauline C. Hughes | Kitsey Snow & Tim Nuland | Tom & Jane Warren |
| Joseph Donahue | David & Nancy Hunt | David & Susan Offer | Matthew Watson |
| Esther Donlon | Theodore & Carolyn Janner | Stephanie Paine & John Pier | Jim Webb |
| Marilyn & Tom Dunn | Phil & Pam Johnson | Francis Palmer | Shevenell M. Webb |
| Margaret Duval | Susan Kaluzynski | Cindy Parker | David Winslow & Kris Doody |
| Tamara & Shawn Feener | Sarah R. Kelly | Sarah Reid | Warren & Barbara Winslow |
| | | Carol Rizzo | |

2015 FIELD PROGRAMS

For further details on these programs, including fees and rain dates, visit www.tkl.org. PREREGISTER by calling 377-2848 or emailing glamarche@tkl.org.

Norris Island Hike and Paddle, Wayne*

Sunday, June 14, 2:00 p.m.

Bring your canoe or kayak and paddle to Norris Island on Androscoggin Lake. Boat available for anyone who is unable to paddle ~ call 377-2848 to register. Meet at the Androscoggin Yacht Club in Wayne. This is a long paddle, pack water and a snack. All ages. PREREGISTER

Macdonald Woods Conservation Area / Readfield Town Forest Hike, Readfield*

Sunday, June 28, 2:00 p.m.

Come hike the 210-acre Macdonald Woods and Readfield Town Forest, which include over four miles of trails. All ages.

Hodgdon Island Preserve Hike & Paddle, Winthrop*

Sunday, July 12, 2:00 p.m.

Bring your canoe or kayak and paddle to the seventeen-acre Hodgdon Island Preserve on Cobbossee Lake, followed by a one-mile trail loop hike. After the hike, feel free to linger for a swim and picnic. Meet on the Collins Road a short distance east of the outlet bridge and park along the Collins Road. All ages. PREREGISTER

Loons, Eagles, and Osprey on Cobbossee Lake

Thursday, July 23, 5:30 - 7:30 p.m.

Join Lisa Kane, MDIFW IFW Education Coordinator, and learn about the loons, eagles, and osprey of Cobbossee Lake. Meet at Lakeside Motel and Cottages in East Winthrop for a short loon/eagle/osprey natural history program, then head out on pontoon boats for the two-hour tour. Bring water and binoculars. This program is presented in partnership with Friends of the Cobbossee Watershed. \$15 adults, \$5 children 8-18, 7 and under free. 18 participant maximum. PREREGISTER

Davidson Nature Preserve Hike, Vassalboro*

Sunday, July 26, 2:00 p.m.

Bring your hiking boots, binoculars, and an appetite for blueberries and join us at the Davidson Nature Preserve in Vassalboro. All ages.

Summer Family Fun: Mount Pisgah Conservation Area Hike followed by Swim at AYC, Winthrop & Wayne, Sunday, August 9, 2:00 p.m.

The forested summit of Mount Pisgah features the former Maine Forest Service Fire Tower. Enjoy a swim following the hike at the Androscoggin Yacht Club in Wayne. Pack a picnic supper! All ages.

Annual Meeting, Tri-Sport Challenge, & Potluck

Sunday, August 23 ~ www.tkl.org for schedule
Camp Winnebago, Echo Lake, Fayette.
Our Annual Meeting will feature our second annual Tri-Sport Challenge, open camp activities for all ages, potluck lunch, and the annual meeting, followed by a PPH Preserve hike. Thanks to **Andy Lilienthal and Camp Winnebago!**

Parker Pond Headland Preserve Hike, Fayette*

Sunday, August 23, 2:00 p.m.

Join us for this family-friendly hike that meanders through the woods and along the shoreline of Parker Pond. All ages.

History and Geology of Howard Hill Field Program

Saturday, September 12, 10:00 a.m.

Bob Marvinney, State Geologist, Maine Geological Survey, and Brian Kent will discuss historical and geological highlights of Howard Hill.

Rain date: Sunday Sept. 13 LYCEUM

Webber-Rogers Farmstead Conservation Area Hike and Vineyard Tour, Litchfield*

Sunday September 13, 2:00 p.m.

Come hike the property's trails, followed by a tour of the farmstead vineyard led by Jerry Rodman, viticultural expert.

Ecology of Howard Hill

Saturday, September 26, 10:00 a.m.

With Justin Schlawin, ecologist with the Maine Natural Areas Program. We will be foraging for wild mushrooms, turning over logs for amphibians, and seeing what else we can find! All ages. LYCEUM

Horseshoe Island Preserve Hike and Paddle, Manchester*

Sunday, September 27, 2:00 p.m.

Bring your canoe or kayak for a paddle to Horseshoe Island Preserve, followed by a hike. Meet on the Collins Road a short distance east of the outlet bridge and park along the Collins Road. All ages. PREREGISTER

Vienna Woods Conservation Area Property Dedication

Saturday, October 3, 10:00 a.m. - noon

Join us in the dedication of Vienna Woods Conservation Area; 71 acres of fields, woods, and streams that are now protected by a conservation easement. All ages.

Alewives and Maine Streams, Lakes, and Rivers at KLT's Seaward Mills Stream Conservation Area, (SMSCA), Vassalboro

Saturday, October 17, 9:00 - 11:00 a.m.

With *Nate Gray*, ME Dept. of Marine Resources Scientist, and co-steward, Seaward Mills Stream Conservation Area and *Theresa Kerchner*, KLT Executive Director.

Rain date: Sun., Oct. 18.

KLT's Capital Campaign and Howard Hill Land Celebration at the Elsie and William Viles Home

Thursday, October 15, 5:00 - 7:00 p.m.

4:00 apple talk with John Bunker, Pomologist

Join us in celebrating our successful capital campaign and Howard Hill land acquisition project. Refreshments, tours of the Viles Home, barn, and orchards, and music. All ages.

Sustainable Balsam Fir-Tipping and Wreath-Making Workshop

Date TBA, Ladd Recreation Center, Wayne

Bring hand shears and light gloves. \$5 KLT members,

\$10 non-members, includes wreath materials. All ages.



2014 Tri-Sport Challenge

* Hike the Hiking Guide Hike



P.O. Box 261
331 Main Street
Winthrop, ME 04364

Phone: 207-377-2848
info@tklt.org
www.tklt.org
Office Hours:
M. - Th. 9:00 a.m. - 4:00 p.m.



Printed on FSC certified 100% post-consumer recycled fibres. Certified EcoLogo and Processed Chlorine Free, and is manufactured using biogas energy.



Tri-Sport Challenge



swim



paddle



run

Annual Meeting
Camp Winnebago, Fayette
August 23, 2015